

EQUIPMENT PARTS – DESIGNED WITH INTEGRITY, ENGINEERED TO LAST

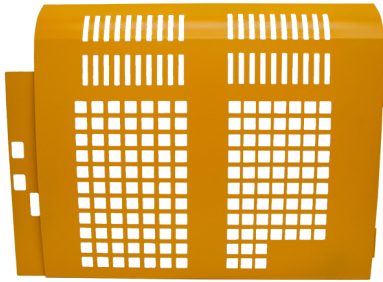
NEW JOHN DEERE PARTS - IN STOCK



PV6900

Excavator Front Window Guard for Deere 120C, 120D, 135D, 160DLC, 200DLC, 225DLC, 240DLC, 270DLC, 350DLC, Hitachi Zaxis 135US-3, Zaxis 160LC-3, ZX200LC-3, Zaxis 225US-3, Zaxis 240LC-3, Zaxis 270LC-3, Zaxis 350LC-3 Excavator

- Made in the USA by PVE



DH700183

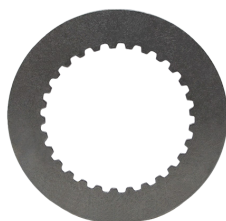
Comp. Door L/H, rear, with hinge for Deere 200D LC, 240D LC, 270D LC Excavator

- Made in the USA by PVE



T116387

Clutch Disc, Friction for Deere 544E, 624E, 624G, 544G, 644E, 644G Wheel Loader



T116584

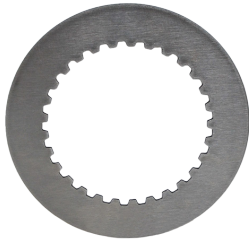
Clutch Disc, Friction for Deere 544E, 624E, 624G, 544G, 644E, 644G Wheel Loader

NEW DEERE PARTS - IN STOCK



T116585

Clutch Disc, Steel for Deere 544E, 624E, 624G, 544G, 644E, 644G Wheel Loader



T116586

Clutch Disc, Steel for Deere 544E, 624E, 624G, 544G, 644E, 644G Wheel Loader



T116981

Clutch Disc, Steel for Deere 544E, 624E, 624G, 544G, 644G Wheel Loader



T122806

Clutch Disc, Friction for Deere 544E, 624E, 624G, 544G, 644G Wheel Loader

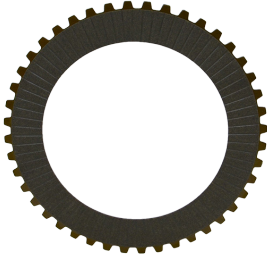


T152734

Clutch Disc, Steel for Deere 644G Wheel Loader

*General model information only. For exact fitment check serial numbers prior to ordering.

NEW DEERE PARTS - IN STOCK



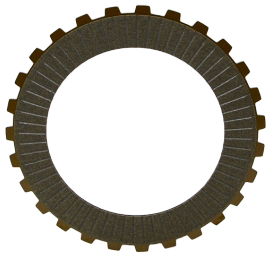
T173636

Clutch Disc, Friction for Deere 444G, 444 P, 444H, 444J s/n 611275-, 444K, 444L, 524 P, 524K, 524K-II, 524L, 544 G, 544 P, 544H, 544J, 544K, 544K-II, 544L, 624 P, 624H, 624J, 624K, 624K-II, 624L, 644 G, 644 P, 644H, 644J, 644K, 644L, 724 P, 724J, 724K, 724L Wheel Loader



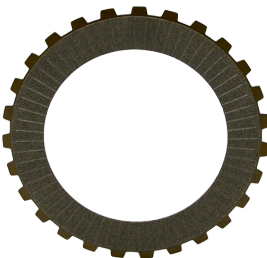
T173638

Clutch Disc, Steel for Deere 444G, 444 P, 444H, 444J s/n 611275-, 444K, 444L, 524 P, 524K, 524K-II, 524L, 544 G, 544 P, 544H, 544J, 544K, 544K-II, 544L, 624 P, 624H, 624J, 624K, 624K-II, 624L, 644 G, 644 P, 644H, 644J, 644K, 644L, 724 P, 724J, 724K, 724L Wheel Loader



T173640

Clutch Disc, Friction for Deere 444G, 444 G, 444 P, 444H, 444J S/N 611275-, 444K, 444L, 524 P, 524K, 524K-II, 524L, 544 G, 544 P, 544H, 544J, 544K, 544K-II, 544L Wheel Loader, 640L, 640L-II, 648L, 648L-II, 748L, 748L-II, 768L-II, 848L, 848L-II, 948L, 948L-II Log Skidder



T173641

Clutch Disc, Friction for Deere 444G, 444 G, 444 P, 444H, 444J S/N 611275-, 444K, 444L, 524 P, 524K, 524K-II, 524L, 544 G, 544 P, 544H, 544J, 544K, 544K-II, 544L Wheel Loader, 640L, 640L-II, 648L, 648L-II, 748L, 748L-II, 768L-II, 848L, 848L-II, 948L, 948L-II Log Skidder

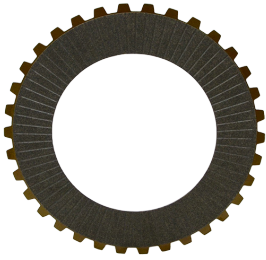


T173642

Clutch Disc, Steel for Deere 444G, 444 G, 444 P, 444H, 444J S/N 611275-, 444K, 444L, 524 P, 524K, 524K-II, 524L, 544 G, 544 P, 544H, 544J, 544K, 544K-II, 544L Wheel Loader, 640L, 640L-II, 648L, 648L-II, 748L, 748L-II, 768L-II, 848L, 848L-II, 948L, 948L-II Log Skidder

*General model information only. For exact fitment check serial numbers prior to ordering.

NEW DEERE PARTS - IN STOCK



T173840

Clutch Disc, Friction for Deere 624 P, 624H, 624J, 624K, 624K-II, 624L, 640L, 640L-II, 644G, 644 G, 644 P, 644H, 644J, 644K, 644, 724 P, 724J, 724K, 724L Wheel Loader, 648L, 648L-II, 748L, 748L-II, 768L-II, 848L, 848L-II, 948L, 948L-II Log Skidder



T173841

Clutch Disc, Friction for Deere 624 P, 624H, 624J, 624K, 624K-II, 624L, 640L, 640L-II, 644G, 644 G, 644 P, 644H, 644J, 644K, 644, 724 P, 724J, 724K, 724L Wheel Loader, 648L, 648L-II, 748L, 748L-II, 768L-II, 848L, 848L-II, 948L, 948L-II Log Skidder



T173842

Clutch Disc, Steel for Deere 624 P, 624H, 624J, 624K, 624K-II, 624L, 640L, 640L-II, 644G, 644 G, 644 P, 644H, 644J, 644K, 644, 724 P, 724J, 724K, 724L Wheel Loader, 648L, 648L-II, 748L, 748L-II, 768L-II, 848L, 848L-II, 948L, 948L-II Log Skidder



RE239058

Clutch Disc, Friction for Deere 360D, 510D, 710D, 460D, 740E, 748E, 648E, 640E, 540E, 548E, 740G, 748G, 640G, 648G, 540G, 548G, 540G-II, 540G-III, 548G-III, 540H, 548H, 560D, 640G-II, 648G-II, 648G-III, 640G-III, 648H, 640H, 640L, 640L-II, 648H, 648L, 648L-II, 748G-III, 560D, 748G-III, 748H, 848H, 748L, 748L-II, 848H, 848L, 848L-II, 948L, 948L-II, Log Skidder, 4000, 4000S Winch



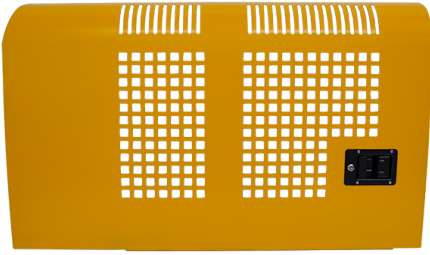
7049098J

Comp. Door, R/H, with latch & hinge for Deere 200D LC, 240D LC, 270D LC Excavator

- Made in the USA by PVE

*General model information only. For exact fitment check serial numbers prior to ordering.

NEW DEERE PARTS - IN STOCK



Comp. Door, R/H, with latch & hinge for Deere 160LC Excavator

- Made in the USA by PVE

AP35834



Comp. Door, L/H, with latch & hinge for Deere 160LC Excavator

- Made in the USA by PVE

AP34788



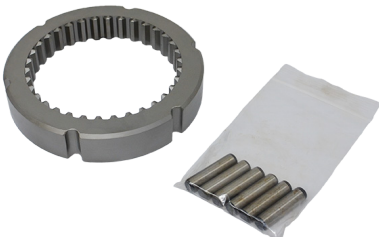
Bushing, Rubber for Deere 333 P, 333G, 335 P Compact Track Loader, 450H, 450J, 450K, 450 P, 550H, 550J, 550K, 550 P, 650H, 650J, 650K, 650 P Dozer

T178620



Clutch Disc, Friction for Deere 444 G, 444 P, 444H, 444J s/n 611275-, 444K, 444L, 524 P, 524K, 524K-II, 524L, 544 G, 544 P, 544H, 544J, 544K, 544K-II, 544L, 624 P, 624H, 624J, 624K, 624K-II, 624L, 644 G, 644 P, 644H, 644J, 644K, 644L, 724 P, 724J, 724K, 724L Wheel Loader

T173637



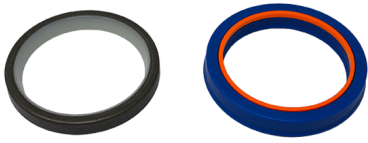
Freespool Ring Gear Kit for Deere 40, 4000, 4000S Winch

- Made in the USA by PVE

AT181675

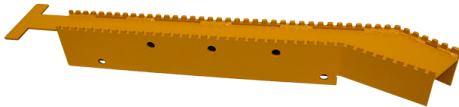
*General model information only. For exact fitment check serial numbers prior to ordering.

NEW DEERE PARTS - IN STOCK



Seal Kit for Deere 450G, 450H, 450J, 450K, 450 P, 550G, 550H, 550J, 550K, 550 P, 555G, 650G, 650H, 650J, 650K, 650 P Dozer

SK100103



Hose Guard, LH for Deere 750J Dozer

- Made in the USA by PVE

AT324248



Hose Guard, RH for Deere 750J Dozer

- Made in the USA by PVE

AT324247



Clamp for Deere 750J, 750K, 750L Dozer

- Made in the USA by PVE

T203016



Seal for Deere 4000 Series Winch

AT12431

*General model information only. For exact fitment check serial numbers prior to ordering.

NEW DEERE PARTS - IN STOCK



Seal, Input Shaft for Deere 4000 Series Winch

AT13161



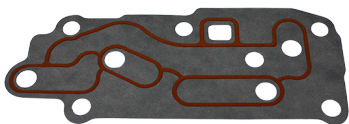
O-Ring for Deere 4000 Series Winch

R26286



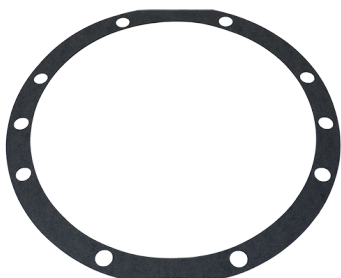
O-Ring for Deere 4000 Series Winch

R26906



Gasket, Control Valve for Deere 4000 Series Winch

T212838

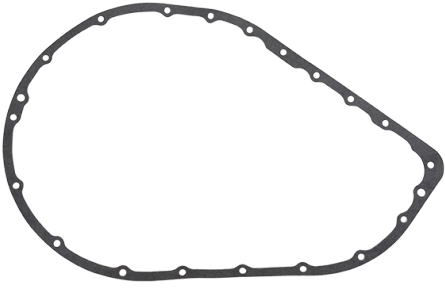


Gasket, Side Cover for Deere 4000 Series Winch

T84781

*General model information only. For exact fitment check serial numbers prior to ordering.

NEW DEERE PARTS - IN STOCK



Gasket, Brake Housing for Deere 4000 Series Winch

T84701

NEW CASE PARTS - IN STOCK



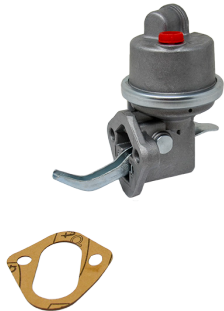
87429970

Transmission Charge Pump for Case 570MXT Ser.3, 570N EP, 570NXT, 575N EP, 580M Ser.2, 580M Ser.3, 580SM Ser.3, 580SM+ Ser.2, 580SM+ Ser.3, 580N, 580N EP, 580SN, 580SN WT, 580SV, 590SM Ser.2, 590SM Ser.3, 590SM+ Ser.3, 590SN Loader Backhoe, 586G Ser.3, 586H, 588G Ser.3, 588H Forklift (All Models w/o PowerShift)



429231A1

Steering Knuckle, L/H for Case 570MXT, 570MXT Ser.3, 570N EP, 570NXT, 580M, 580M Ser.2, 580M Ser.3, 580N, 580N EP, 580SM, 580SM Ser.2, 580SM Ser.3, 580SM+ Ser.2, 580SM+ Ser.3, 580SN, 580SN WT, 590SM, 590SM Ser.2, 590SM Ser.3, 590SM+ Ser.3, Loader Backhoe, 585G, 585H, 586G, 586H, 588G, 588H Forklift



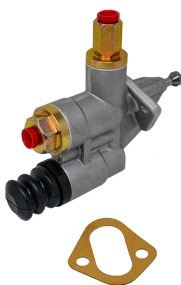
3904374

Fuel Pump for Case 550E Dozer, 855D Crawler Loader, 9020, 688C s/n 10501-, Excavator 621, W11B Wheel Loader, 780D, 580K s/n JJG0020000-, 580SK Loader Backhoe



A173180

Muffler for Case 480E, 480F, 580E, 580SE Loader Backhoe, 584E, 585E, 585G, 586E, 586G, 588G Forklift, W11B Wheel Loader



3933254

Fuel Pump for Case 550H, 650H, 650K Series 1, 750H, 750K Series 1, 850K Series 1 Dozer, 1840, 1845C Skid Steer, 521D Wheel Loader

*General model information only. For exact fitment check serial numbers prior to ordering.

NEW CASE PARTS - IN STOCK



Rod for Case 650M Dozer

- Made in the USA by PVE

48119445



Extension Tube for Case 650M Dozer

- Made in the USA by PVE

47976765



Seal Kit for Case 650M TIER 4B, 750M TIER 4B, 850M TIER 4B, 850M TIER 4B FINAL (ALL SUB MODELS - LT,WT) Dozer

48124898



Yoke for Case 650M Dozer

- Made in the USA by PVE

48119443



Trunnion Block Set, 3pc for Case 550H, 650G, 650H, 750H, 850G, 850H Dozer

- Made in the USA by PVE

188904A1

*General model information only. For exact fitment check serial numbers prior to ordering.

NEW CASE PARTS - IN STOCK



Bushing for Case 580N, 580SN Loader Backhoe

- Made in the USA by PVE

84224880



Cutting Edge for Case 570LXT, 570MXT, 580L, 580SL, 580M, 580SM, 580N, 580SN Loader Backhoe with 93" Bucket

185506A1

NEW CAT PARTS - IN STOCK



Angle Cylinder, with bushings for Cat D6K LGP, D6K XL Dozer

- Made in the USA by PVE

269-2728



Gear Coupling, 55T for Cat D3K, D3K2, D4K, D4K2, D5K, D5K2, D1 (XKF, XKL, XT3), D2 (XKM, XKR), D3 (XKW, XKY, XT3) Dozer

- Made in the USA by PVE

244-1522



Sun Gear, 17T for Cat D3K, D3K2, D4K, D4K2, D5K, D5K2, and D1, D2, D3 (Next Gen Models) Dozer

- Made in the USA by PVE

244-1516



Planetary Gear, 30T for Cat D3K, D3K2, D4K, D4K2, D5K, D5K2, D1 Next Gen, D2 (XKM, XKR) Next Gen, D3 (XKW, XKY, XT3) Next Gen Dozer

- Made in the USA by PVE

244-1518



Planetary Gear, 44T for Cat D3K, D3K2, D4K, D4K2, D5K, D5K2, D1 Next Gen, D2 (XKM, XKR) Next Gen, D3 (XKW, XKY, XT3) Next Gen Dozer

- Made in the USA by PVE

247-1459

*General model information only. For exact fitment check serial numbers prior to ordering.

NEW CAT PARTS - IN STOCK



7Y0223

Planetary Shaft for Cat D3K, D3K2, D4K, D4K2, D5K, D5K2, D1 Next Gen, D2 (XKM, XKR) Next Gen, D3 (XKW, XKY, XT3) Next Gen Dozer, 315C, 315DL, 318B, 318C, 318EL, 319C, 319D, 319DL, 320L, 320B, 320BL, 320BN, 320C, 320C FM, 320D, 320D FM, 320D GC, 320DL, 320DLN, 320DLRR, 320DRR, 320D2, 320D2GC, 320E, 320EL, 320ELN, 320ELRR, 320ERR, 320N, 321B, 321C, 321DLCR, 322L, 322LN, 322B, 322BL, 323DL, 323D2L, 323EL, 323FL, 325L, 325BL, 325BLN Excavator

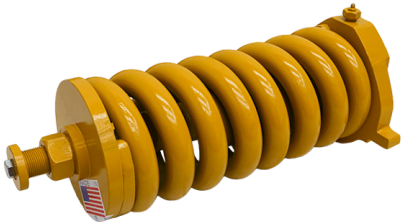
- Made in the USA by PVE



7Y0225

Planetary Shaft for Cat D3K, D3K2, D4K, D4K2, D5K, D5K2, D1 Next Gen, D2 (XKM, XKR) Next Gen, D3 (XKW, XKY, XT3) Next Gen Dozer, 311C, 313D2, 315C, 315DL, 316EL, 316FL, 318B, 318BN, 318C, 318DL, 318D2, 318D2L, 319C, 319D, 319DL, 319DLN, 320L, 320A, 320AL, 320AN, 320B, 320BL, 320BLL, 320BN, 320C, 320CFM, 320D, 320DFM, 320DGC, 320DL, 320DLN, 320DLRR, 320DRR, 320D2, 320D2GC, 320D2L, 320E, 320EL, 320ELN, 320ELRR, 320N, 321B, 321C, 321DLCR, 322L, 322LN, 322A, 322B, 322BL, 322BLN, 322C, 322CFM, 322N, 323D, 323DL, 323DLN, 323D2L, 323EL, 323FL, 324D, 324DFM, 324DL, 324DLN, 324E, 324EL, 324ELN, 325L, 325LN, 325A, 325B, 325BL, 325C, 325CFM, 325CL, 325D, 325DFM, 325DL, 326DL, 326D2L, 326FL, 326FLN, 328DLCR, 329D, 329DL, 329DLN, 329D2L, 329E, 329EL, 329FL, 330D2L, 330F, 330FL, 330FLN, 365B, 365B2, 365BL, 365C, 365CL, 374DL, 374FL Excavator

- Made in the USA by PVE



PV345

Spring Assembly for Cat D3C (1PJ138-, 6PF145-, 7JF180-334, 8BF149-, 4HJ1-880, 5CJ1-1047, 5ZG1-57, 8DG1-147, 4HJ881-, 7JG150-, 4KS, 6SL1-2943, 5CJ1048-, 5ZG58-, 8DG148-, 7XL1-1107), D4C (1RJ636-, 2CJ126-429 Type 2, 2CJ430-, 7KG1-906, 9BG1-464, 4LS, 6BS, 6YL, 6SL1-889, 7KG907-, 9BG465-, 1FW, 8CS), D3G, D4G (FDC1-520, CFN1-1071, HYD, TLX) Dozer

- Made in the USA by PVE

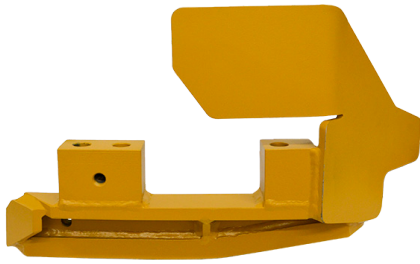


PV346

Spring Assembly for Cat D3B (27Y, 24Y), D3C (1PJ1-137, 6PF1-144, 7JF1-179, 8BF1-148), D4C (1RJ1-635, 2CJ1-125, 2CJ126-429 Type 1) Dozer

- Made in the USA by PVE

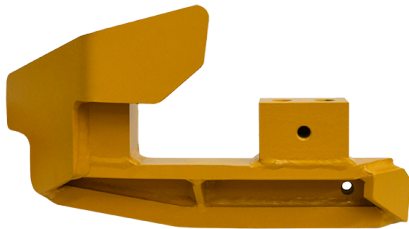
NEW CAT PARTS - IN STOCK



345-9610

Chain Guide, Left Outer for Cat D5K, D5K2 (w/ SystemOne UC) Dozer

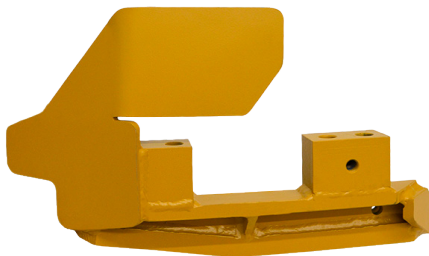
- Made in the USA by PVE



345-9636

Chain Guide, Left Inner for Cat D5K, D5K2 (w/ SystemOne UC) Dozer

- Made in the USA by PVE



345-9609

Chain Guide, Right Outer for Cat D5K, D5K2 (w/ SystemOne UC) Dozer

- Made in the USA by PVE



345-9635

Chain Guide, Right Inner for Cat D5K, D5K2 (w/ SystemOne UC) Dozer

- Made in the USA by PVE

*General model information only. For exact fitment check serial numbers prior to ordering.

NEW CAT PARTS - IN STOCK



Seal Kit for Cat D5K, D5K2, D3 Next Gen Dozer

904411



Exhaust Pipe for Cat D3K2, D4K2, D5K2 Dozer

342-9795



Wear Plate for Cat D5K, D5K2, D3 Next Gen
(All with System One UC Only) Dozer

- Made in the USA by PVE

310-7375



Rockguard, RH for Cat D5K, D5K2 (w/ SystemOne UC) Dozer

- Made in the USA by PVE

356-5278



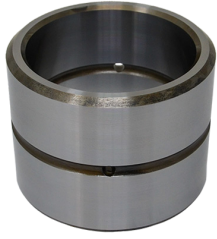
Rockguard, LH for Cat D5K, D5K2 (w/ SystemOne UC) Dozer

- Made in the USA by PVE

356-5282

*General model information only. For exact fitment check serial numbers prior to ordering.

NEW CAT PARTS - IN STOCK



229-1092

Bushing for Cat 313 (SYZ, ZCM), 311C, 311D LRR, 311F LRR, 312C, 312C L, 312D, 312D L, 312D2, 312D2 GC, 312D2 L, 312E, 312E L, 312F, 312F GC, 313D, 313D2, 313D2 GC, 313D2 LGP, 313D2-GC, 313F, 313F GC, 313F L, 313F LGC, 314C, 314D CR, 314D LCR, 314E CR, 314E LCR, 314F CR, 315F LCR Excavator

- Made in the USA by PVE



264-5014

Top Roller Bracket for Cat D5K, D5K2, D3 Next Gen Dozer

- Made in the USA by PVE



419-3223

Plunger for Cat D5K2 (KY2, RRE, YT3, KW2, WT3), D3 Next Gen Dozer

- Made in the USA by PVE



315-8453

Plunger for Cat D5K, D5K2 (TRF, KWW, KYY) Dozer

- Made in the USA by PVE



285-3473

Wear Plate for Cat D5K, D5K2 (KYY, TRF, KWW) Dozer

- Made in the USA by PVE

*General model information only. For exact fitment check serial numbers prior to ordering.

NEW CAT PARTS - IN STOCK



Wear Strip, 16mm for Cat D5K, D5K2, D3 Next Gen Dozer

- Made in the USA by PVE

361-3050



Wear Strip, 16mm for Cat D5K, D5K2, D3 Next Gen Dozer

- Made in the USA by PVE

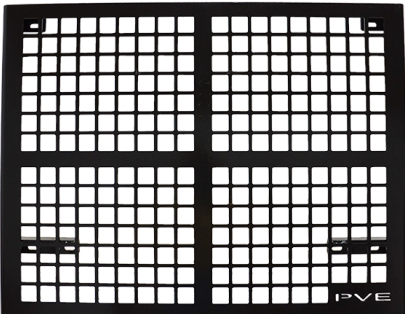
419-0960



Pin for Cat 311A, 311B, 311C, 311DLRR, 311FLRR, 312A, 312B (2NS, 9GR), 312BL (3FS, 8JR), 312C (FDS, BWH, DBN), 312CL (CBA), 312D, 312DL, 312D2, 312D2GC, 312D2L, 312E, 312EL, 312F, 312FGC, 313 (JHR, SYZ, ZCM), 313GC (NFZ, GYF), 313B, 313D, 313D2, 313D2GC, 313D2LGP, 313F, 313FGC, 313FL, 313FGLC, 314C, 314 DCR, 314DLCR, 314ECR, 314ELCR, 314FCR, 315 (WKX), 315GC (LYW, FTY), 315FLCR Excavator

- Made in the USA by PVE

086-0523



Window Guard, Lower for Cat 312D, 312D L, 312E, 312E L, 312F, 312F GC, 313F L, 313F LGC, 315D L, 316E L, 316F L, 318E L, 318F L, 319D L, 319D LN, 320 (HEX), 320D, 320E, 320E L, 320E LRR, 323 (RAZ), 323D, 323F L, 324D, 324D L, 324E, 324E L, 326E L, 326F L, 329D, 329D L, 329E, 329E L, 330F, 335F, 336D, 336E, 336E L, 336F, 336F L, 345D L, 349E, 349E L, 349F, 349F L Excavator

- Made in the USA by PVE

342-3750



Yoke for Cat D5K, D5K2 (TRF, KWW, KYY) Dozer

- Made in the USA by PVE

352-8991

*General model information only. For exact fitment check serial numbers prior to ordering.

NEW CAT PARTS - IN STOCK



Cover for Cat D5K, D5K2, D3 Next Gen Dozer

- Made in the USA by PVE

262-5866



Idler Cover for Cat D5K, D5K2, D3 Next Gen (All w/ Systemone UC Only) Dozer

- Made in the USA by PVE

290-2700



Bracket, RH for Cat D5K, D5K2 (KYY, TRF, KWW) (All w/ Systemone UC Only) Dozer

- Made in the USA by PVE

305-1466



Bracket, LH for Cat D5K, D5K2 (KYY, TRF, KWW) (All w/ Systemone UC Only) Dozer

- Made in the USA by PVE

305-1469



Bracket, RH for Cat D5K, D5K2 (KYY, TRF, KWW) (All w/ Systemone UC Only) Dozer

- Made in the USA by PVE

305-1471

*General model information only. For exact fitment check serial numbers prior to ordering.

NEW CAT PARTS - IN STOCK



305-1473

Bracket, LH for Cat D5K, D5K2 (KYY, TRF, KWW) (All w/ Systemone UC Only) Dozer

- Made in the USA by PVE



305-1474

Idler Cover for Cat D5K, D5K2 (KYY, TRF, KWW) (All w/ Systemone UC Only) Dozer

- Made in the USA by PVE



305-1475

Idler Cover, Side Plate for Cat D5K, D5K2 (KYY, TRF, KWW) (All w/ Systemone UC Only) Dozer

- Made in the USA by PVE



345-9605

Sprocket Guard, RH for Cat D5K, D5K2 (w/ SystemOne UC)

- Made in the USA by PVE



345-9606

Sprocket Guard, LH for Cat D5K, D5K2 (w/ SystemOne UC)

- Made in the USA by PVE

*General model information only. For exact fitment check serial numbers prior to ordering.

NEW CAT PARTS - IN STOCK



248-7820

Pin for Cat 311C, 311D LRR, 311F LRR, 312 GC, 312C (FDS), 312C L (CBA), 312D, 312D L, 312D2, 312D2 GC, 312D2 L, 312E, 312E L, 312F, 312F GC, 313 (JHR, NPY, SYZ, ZCM), 313 GC, 313D, 313D2, 313D2 GC, 313D2 LGP, 313D2-GC, 313F, 313F GC, 313F L, 313F LGC, 314C, 314D CR, 314D LCR, 314E CR, 314E LCR, 314F CR, 315 (WKX), 315 GC, 315F LCR Excavator

- Made in the USA by PVE



7I6843

Pin for Cat 311-A, 311B (2LS, 8GR), 311C, 311D LRR, 311F LRR, 312 GC, 312-A, 312B (2NS, 9GR), 312B L (3FS, 8JR), 312C (FDS), 312C L (CBA), 312D, 312D L, 312D2, 312D2 GC, 312D2 L, 312E, 312E L, 312F, 312F GC, 313 (JHR, NPY, SYZ, ZCM), 313 GC, 313B, 313D, 313D2, 313D2 GC, 313D2 LGP, 313D2-GC, 313F, 313F GC, 313F L, 313F LGC, 314C, 314D CR, 314D LCR, 314E CR, 314E LCR, 314F CR, 315 (WKX), 315 GC, 315F LCR Excavator

- Made in the USA by PVE



345-9601

Sprocket Guard, Right Inner for Cat D5K, D5K2 (w/ SystemOne UC)

- Made in the USA by PVE



345-9602

Sprocket Guard, Left Inner for Cat D5K, D5K2 (w/ SystemOne UC)

- Made in the USA by PVE

NEW CAT PARTS - IN STOCK



322-0304

Sun Gear, 13T for Cat D3K, D3K2, D4K, D4K2, D5K, D5K2, D1 Next Gen, D2 (XKM, XKR) Next Gen, D3 (XKW, XKY, XT3) Next Gen Dozer

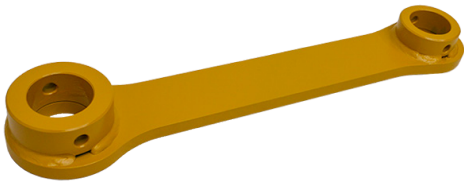
- Made in the USA by PVE



248-7822

Link, RH for Cat 313 (JHR, NPY, SYZ, ZCM), 315 (WKX), 311C, 311D LRR, 311F LRR, 312 GC (JKF, KHY, LHR), 312C (FDS), 312C L (CBA), 312D, 312D L, 312D2, 312D2 GC, 312D2 L, 312E, 312E L, 312F, 312F GC, 313 GC (NFZ, JKY, RHB, GYF, HPL, FLK, HFK, KFW), 313D, 313D2, 313D2 GC, 313D2 LGP, 313D2-GC, 313F, 313F GC, 313F L, 313F LGC, 314C, 314D CR, 314D LCR, 314E CR, 314E LCR, 314F CR, 315 GC (LYW, FTY, ZCP, NHR), 315F LCR Excavator

- Made in the USA by PVE



248-7823

Link, LH for Cat 313 (JHR, NPY, SYZ, ZCM), 315 (WKX), 311C, 311D LRR, 311F LRR, 312 GC (JKF, KHY, LHR), 312C (FDS), 312C L (CBA), 312D, 312D L, 312D2, 312D2 GC, 312D2 L, 312E, 312E L, 312F, 312F GC, 313 GC (NFZ, JKY, RHB, GYF, HPL, FLK, HFK, KFW), 313D, 313D2, 313D2 GC, 313D2 LGP, 313D2-GC, 313F, 313F GC, 313F L, 313F LGC, 314C, 314D CR, 314D LCR, 314E CR, 314E LCR, 314F CR, 315 GC (LYW, FTY, ZCP, NHR), 315F LCR Excavator

- Made in the USA by PVE



285-3472

Wear Strip, 4.5mm for Cat D5K, D5K2 (KYY, TRF, KWW) Dozer

- Made in the USA by PVE



315-8447

Recoil Spring for Cat D5K, D5K2 D3 Next Gen Dozer

- Made in the USA by PVE

*General model information only. For exact fitment check serial numbers prior to ordering.

NEW CAT PARTS - IN STOCK



Wear Strip, 4.5mm for Cat D5K, D5K2, D3 Next Gen Dozer

- Made in the USA by PVE

419-0957



Recoil Spring Assembly for Cat D5K2 (KY2, RRE, YT3, KW2, WT3), D3 Next Gen Dozer

- Made in the USA by PVE

463-5600



Pin for Cat 319DL, 319DLN, 320DL, 320EL, 321D LCR Excavator

- Made in the USA by PVE

254-3052



Pin for Cat 319DL, 319DLN, 320DL, 320EL, 321D LCR Excavator

- Made in the USA by PVE

254-3053



Bushing for Cat 315D, 315DL, 316E, 316EL, 319DL, 319DLN, 320DL, 320EL, 321D LCR Excavator

- Made in the USA by PVE

244-4360

*General model information only. For exact fitment check serial numbers prior to ordering.

NEW CAT PARTS - IN STOCK



248-7835

Bushing for Cat 313 (SYZ, ZCM), 311C, 311D LRR, 311F LRR, 312C (FDS), 312C L (CBA), 312D, 312D L, 312D2, 312D2 GC, 312D2 L, 312E, 312E L, 312F, 312F GC, 313D, 313D2, 313D2 GC, 313D2 LGP, 313D2-GC, 313F, 313F GC, 313F L, 313F LGC, 314C, 314D CR, 314D LCR, 314E CR, 314E LCR, 314F CR, 315F LCR Excavator

- Made in the USA by PVE

NEW BOBCAT PARTS - IN STOCK



6676728

Muffler for Bobcat 773 (s/n 500K11001-, 519011001-, 519211001-), S150 (s/n 524011001-, 524111001-), S160 (s/n 524011001-, 524111001-), S175 (s/n 519028001-, 519215001), S185 (s/n 519028001- 519215001-), T190 (s/n 519311001- 519411001-, 527011001-) Skid Steer/ Compact Track Loader



6683915

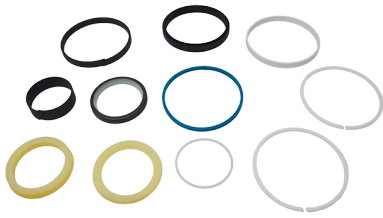
Muffler for Bobcat S150 (s/n 526611001-, 526711001), S160 (s/n 526611001-, 526711001-, 529911001-, 526811001-), S175 (s/n 525011001-, 525111001-), S185 (s/n 525011001- 525111001-, 530311001- 530411001), S205 (s/n 528411001- 528511001-, 530511001- 530611001-), T180 (s/n 524211001- 527511001- 527611001-, 531411001-, 531511001-), T190 (s/n 527011001-, 527911001-, 531611001- 531711001-, 527711001-, 527811001-) Skid Loader/Compact Track Loader

NEW FORD NEW HOLLAND PARTS - IN STOCK



PV87315527

Seal Kit for Ford New Holland 555D, 555E, 575D, 575E, 655D, 655E, 675D, 675E, B95, B110, B115, LB75, LB75B, LB90, LB90B, LB95, LB95B, LB110, LB110B, LB115, LB115B Loader Backhoe



84209920

Seal Kit for Ford New Holland 555E, 575E, 655E, 675E, LB75, B90B, B95, B95B, B110, B110B, B115, B115B, LB75B, LB90, LB90B, LB110B, LB115, LB115B Loader Backhoe



83971999

Seal Kit for Ford New Holland 555E, 575E, 655E, 675E, LB75, B90B, B95, B95B, B110, B110B, B115, B115B, LB75B, LB90, LB90B, LB110B, LB115, LB115B Loader Backhoe



85800600

Stabilizer Cylinder for Ford New Holland 555E, 575E, 655E, 675E, LB75, B90B, B95, B95B, B110, B110B, B115, B115B, LB75B, LB90, LB90B, LB110B, LB115, LB115B Loader Backhoe

- Made in the USA by PVE



87315527

Bucket Cylinder for New Holland 555D, 555E, 575D, 575E, 655D, 655E, 675D, 675E, B95, B110, B115, LB75, LB75B, LB90, LB90B, LB95, LB95B, LB110, LB110B, LB115, LB115B Loader Backhoe

- Made in the USA by PVE

*General model information only. For exact fitment check serial numbers prior to ordering.

NEW FORD NEW HOLLAND PARTS - IN STOCK



Bushing for New Holland 555D, 555E, 575D, 575E, 655D, 655E, 675D, 675E, B95, B110, B115, LB75, LB75B, LB90, LB90B, LB95, LB95B, LB110, LB110B, LB115, LB115B
Loader Backhoe

83910547

- Made in the USA by PVE

NEW KOMATSU PARTS - IN STOCK



12Y-57-11500

Seat Assembly, Cloth for Komatsu D31EX-22, D31PX-22, D37EX-22, D37PX-22, D39EX-22, D39PX-22, D51EX-22, D51PX-22 Dozer



12Y-57-11190

Seat Assembly, Vinyl for Komatsu D31EX-22, D31PX-22, D37EX-22, D37PX-22, D39EX-22, D39PX-22, D51EX-22, D51PX-22 Dozer



134-57-61300

Seat Assembly, Vinyl for Komatsu D31EX-21, D31PX-21, D37EX-21, D37PX-21, D39EX-21, D39PX-21, D61EX-12, D61PX-12, D61EX-15, D61PX-15, D65EX-12, D65PX-12, D65EX-15, D65PX-15 Dozer

Seat Assembly, Cloth for Komatsu D31EX-21, D31PX-21, D39EX-21, D39PX-21, D39EX-22, D61EX-12, D61PX-12, D61EX-15, D61PX-15, D65EX-12, D65PX-12 Dozer

134-57-61200



134-72-61521

Pin for Komatsu D61EX-12, D61EX-12A-W, D61EX-15, D61EX-15EO-BW, D61PX-12, D61PX-12A-W, D61PX-12L, D61PX-15, D61PX-15EO-BW, D61EX-23, D61EXI-23, D61PX-23, D61PXI-23, D61EX-24, D61EXI-24, D61PX-24, D61PXI-24 Dozer

• Made in the USA by PVE

*General model information only. For exact fitment check serial numbers prior to ordering.

NEW KOMATSU PARTS - IN STOCK



Pin for Komatsu D61EX-12, D61EX-12A-W, D61EX-15, D61EX-15EO-BW, D61PX-12, D61PX-12A-W, D61PX-12L, D61PX-15, D61PX-15EO-BW, D61EX-23, D61EXI-23, D61PX-23, D61PXI-23, D61EX-24, D61EXI-24, D61PX-24, D61PXI-24 Dozer

13Y-72-14270

- Made in the USA by PVE



Pin for Komatsu D61EX-23, D61EXI-23, D61PX-23, D61PXI-23, D61EX-24, D61EXI-24, D61PX-24, D61PXI-24 Dozer

13Y-72-14240

- Made in the USA by PVE



Pin for Komatsu D61EX-12, D61EX-12A-W, D61PX-12, D61PX-12A-W, D61PX-12L, D61EX-15, D61EX-15EO-BW, D61PX-15, D61PX-15EO-BW, D61EX-23, D61EXI-23, D61PX-23, D61PXI-23, D61EX-24, D61EXI-24, D61PX-24, D61PXI-24 Dozer

13Y-72-24252

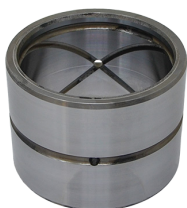
- Made in the USA by PVE



Pin for Komatsu D61EX-12, D61EX-12A-W, D61PX-12, D61PX-12A-W, D61PX-12L, D61EX-15, D61EX-15EO-BW, D61PX-15, D61PX-15EO-BW, D61EX-23, D61EXI-23, D61PX-23, D61PXI-23, D61EX-24, D61EXI-24, D61PX-24, D61PXI-24 Dozer

13Y-72-24262

- Made in the USA by PVE



Bushing for Komatsu D61EX-12, D61EX-12A-W, D61EX-15, D61EX-15EO-BW, D61PX-12, D61PX-12A-W, D61PX-12L, D61PX-15, D61PX-15EO-BW, D61EX-23, D61EXI-23, D61PX-23, D61PXI-23, D61EX-24, D61EXI-24, D61PX-24, D61PXI-24 Dozer

134-72-71850

- Made in the USA by PVE

*General model information only. For exact fitment check serial numbers prior to ordering.

NEW KOMATSU PARTS - IN STOCK



Piston, Adjuster for Komatsu D61EX-12, D61EX-15, D61PX-15, D61EX-23, D61EXi-23, D61PX-23, D61PXi-23, D61EX-24, D61EXi-24, D61PX-24, D61PXi-24, D63E-12 Dozer

- Made in the USA by PVE

134-30-63142

NEW JCB PARTS - IN STOCK



Seal Kit for JCB 214, 214E, 215, 215S, 3CX, 3CX14, 3CX15, 4CX, 4CX15 Loader Backhoe

PV557-60073



Stabilizer Cylinder for JCB 214, 214E, 215, 215S, 3CX, 3CX14, 3CX15, 4CX, 4CX15 Loader Backhoe

- Made in the USA by PVE

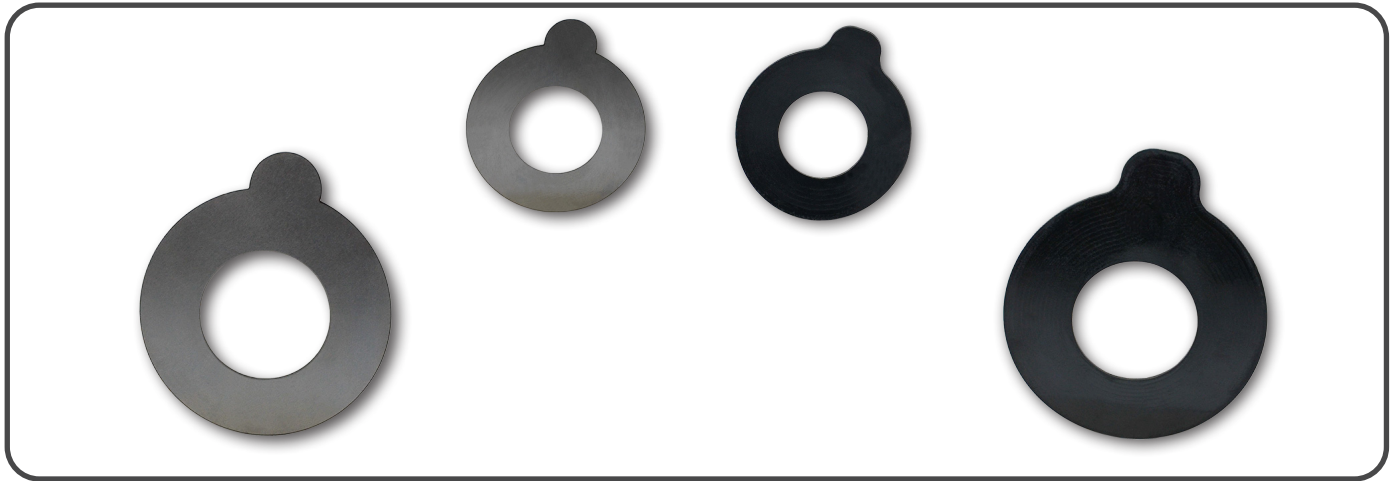
557-60073

NEW Steel & Poly Shims

Dozer & Excavator



OVERVIEW



Steel Pin Shims

Part No.	I.D.	Th. (mm)
45X1ST	45	1.0
45X2ST	45	2.0
50X1ST	50	1.0
50X2ST	50	2.0
55X1ST	55	1.0
55X2ST	55	2.0
60X1ST	60	1.0
60X2ST	60	2.0
65X1ST	65	1.0
65X2ST	65	2.0
70X1ST	70	1.0
70X2ST	70	2.0
80X1ST	80	1.0
80X2ST	80	2.0
90X1ST	90	1.0
90X2ST	90	2.0
100X1ST	100	1.0
100X2ST	100	2.0

Poly Pin Shims

Part No.	I.D.	Th. (mm)
45X1TP	45	2.0
60X2TP	60	2.0
60X3TP	60	3.0
65X2TP	65	2.0
65X3TP	65	3.0
70X2TP	70	2.0
70X3TP	70	3.0
80X2TP	80	2.0
80X3TP	80	3.0
90X2TP	90	2.0
90X3TP	90	3.0
100X2TP	100	2.0
100X3TP	100	3.0
110X2TP	110	2.0
110X3TP	110	3.0

Contact Our Sales Team Today (330) 674-0081

NEW Pin Seals & Split Type O-Rings

Dozer & Excavator



OVERVIEW



Pin Seals

Part No.	I.D. x O.D. (mm)	Th. (mm)
40X50X4	45 x 50	4.0
40X55X4	40 x 55	4.0
40X55X6	40 x 55	6.0
45X55X4	40 x 55	4.0
45X55X6	45 x 55	6.0
45X60X4	45 x 60	4.0
45X60X6	45 x 60	6.0
50X60X4	50 x 60	4.0
50X65X4	50 x 65	4.0
60X75X4	60 x 75	4.0
60X75X6	60 x 75	6.0
65X80X4	65 x 80	4.0
65X80X6	65 x 80	6.0
70X85X4	70 x 85	8.0
70X85X6	70 x 85	5.0
70X85X8	70 x 85	4.0
4084578	71 x 86	6.0
75X90X4	75 x 90	8.0
75X90X6	75 x 90	5.0
75X90X8	75 x 90	4.0
80X95X4	80 x 95	6.0
80X95X6	80 x 95	8.0
80X95X8	80 x 95	4.0
85X100X4	85 x 100	6.0
85X100X6	85 x 100	8.0
85X100X8	85 x 100	4.0
90X105X4	90 x 105	6.0
90X105X6	90 x 105	8.0
90X105X8	90 x 105	4.0
100X115X4	100 x 115	6.0

Split Type O-Rings

Part No.	I.D. (mm)	Th. (mm)
70X110R	70	11.0
80X110R	80	11.0
90X110R	90	11.0
100X110R	100	11.0
110X110R	110	11.0
120X120R	120	12.0
130X120R	130	12.0
145X120R	145	12.0
156X120R	156	12.0
166X120R	166	12.0
176X120R	176	12.0
186X120R	186	12.0

Pin Seals Cont.

Part No.	I.D. x O.D. (mm)	Th. (mm)
100X115X6	100 X 115	6.0
100X115X8	100 X 115	8.0
110X130X6	110 X 130	6.0
110X130X8	100 X 130	8.0
110X140X8	120 X 140	8.0

Contact Our Sales Team Today
(330) 674-0081