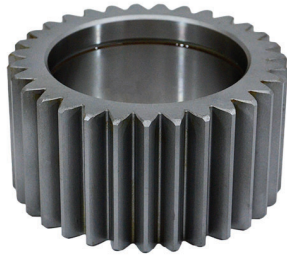


**EQUIPMENT PARTS – DESIGNED WITH INTEGRITY, ENGINEERED TO LAST**

## NEW JOHN DEERE PARTS - IN STOCK



**T183921**

Planetary Pinion for Deere 310E, 310G, 310SE, 310SG, 315SE, 315SG, 410E, 410G Backhoe & 485E, 486E, 488E Forklift

- Made from case hardened alloy steel
- Made in the USA by PVE



**AT223910**

Floating Face Seal for Deere 700H, 700J, 700K Dozer



**AT374827**

Floating Face Seal for Deere 750J STD and LT s/n -185663, 750J WT and LGP s/n -181538, 850J STD and LT s/n -177272, 850J WT and WLT s/n -175721, 850J LGP s/n -180889, 850JR s/n-175721 Dozer

---

## NEW KOMATSU PARTS - IN STOCK

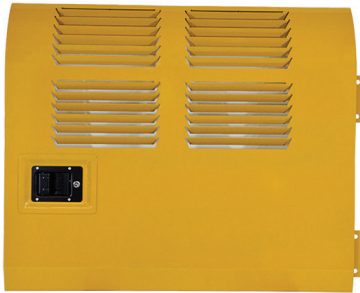
---



**2A6-54-11951**

Comp. Door R/H, rear with latch & hinge for Komatsu  
PC210LC-11 Excavator

- Made in the USA by PVE



**2A6-54-11711**

Comp. Door L/H, rear with latch & hinge for Komatsu  
PC210LC-11 Excavator

- Made in the USA by PVE