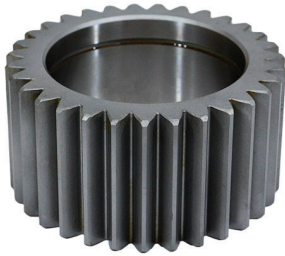


EQUIPMENT PARTS – DESIGNED WITH INTEGRITY, ENGINEERED TO LAST

NEW JOHN DEERE PARTS - IN STOCK



T183921

Planetary Pinion for Deere 310E, 310G, 310SE, 310SG, 315SE, 315SG, 410E, 410G Backhoe & 485E, 486E, 488E Forklift

- Made from case hardened alloy steel
- Made in the USA by PVE



AT223910

Floating Seal for Deere 700H, 700J, 700K Dozer



AT374827

Floating Seal for Deere 750J STD and LT s/n -185663, 750J WT and LGP s/n -181538, 850J STD and LT s/n -177272, 850J WT and WLT s/n -175721, 850J LGP s/n -180889, 850JR s/n -175721 Dozer



T154952

Shaft for Deere 310E, 310G, 310SE, 310SG, 315SE, 315SG, 410E, 410G Backhoe 485E, 486E, 488E Forklift

- Made in the USA by PVE

NEW JOHN DEERE PARTS - IN STOCK



T394702

Bull Gear for Deere STD/LT Models (750J s/n: 162860-, 750J-II, 750K, 850J s/n: 164781-, 850J-II, 850K), WT/LGP Models (750J, 750J-II, 750K, 850J, 850J-II, 850K), WLT Models (850J, 850J-II, 850K)

- Made in the USA by PVE



T394706

Planetary Gear for Deere 850J, 850J-II, 850K (All Model Variations)

- Made in the USA by PVE



PV6002

Rear Screen w/ Door for Deere 700J s/n -150469 w/ Cab

- Made in the USA by PVE



T394699

Pinion Shaft for Deere 850J s/n: 164781-, 850J-II, 850K (STD/LT Models)

- Made in the USA by PVE

NEW JOHN DEERE PARTS - IN STOCK



0693001

Floating Seal for Deere / Hitachi 160LC, EX160LC-5 Excavators



AT450312

Floating Seal for Deere 750J STD and LT s/n 185664-, 750J WT and LGP s/n 181539-, 750J-II s/n D306890-330911, 750J-II s/n D000001-, 750J-II Outside Dozer, 750K, 850J STD and LT s/n 177273-, 850J WT and WLT s/n 175722-, 850J LGP s/n 180890-, 850JR s/n 175722-, 850J-II, 850K Dozer



FYB00000549

Floating Seal for Deere/Hitachi 160DLC, 160GLC, 180GLC, 200CLC, 200DLC, 200G, 200LC, EX200LC-5, 210G, 210GL-C, 225DLC, 230CLC, 230LC, EX230LC-5, 230LCRD, 230LCR, 240DLC, 245GLC, 250GLC, 790ELC, ZX160LC-3, ZX200LC-3, ZX210F-3, ZX160LC-5G, ZX160LC-5N, ZX160LC-6N, ZX180LC-5G, ZX180LC-5N, ZX180LC-6N, ZX200F, ZX210-5A, ZX210-5G, ZX210LC-5N, ZX210LC-6N, ZX240LC-3, ZX245USLC-5N, ZX245USLC-6N, ZX250LC-5G, ZX250LC-6N Excavator



PV6003

Air Conditioner Guard for Deere 450H, 550H, 650H, 700H, 450J, 550J, 650J, 700J (All J Models s/n -150469), Model with cab

- Made in the USA by PVE

NEW JOHN DEERE PARTS - IN STOCK



Sun Gear for Deere 850J, 850J-II, 850K (All Model Variations)

- Made in the USA by PVE

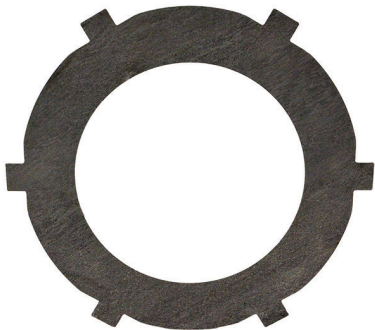
T394704



Pin, Planetary Gear for Deere 750J, 750J-II, 750K, 850J, 850J-II, 850K (All Model Variations)

- Made in the USA by PVE

T372247



Clutch Plate for Deere 400G, 450E, 455E, 450G, 550G, 650G, Dozer, 455G, 555G Crawler Loader, 410D, 500, 500B, 500C, 510, 510D, 710C, 710D Loader Backhoe, 440A, 440B, 540B, 540D, 548D, 640, 640D Skidder, 4000 Series Winch

R80813



Hub Gear for Deere 850J, 850J-II, 850K, 850L (All Model Variations) Dozer

- Made in the USA by PVE

T200201

NEW JOHN DEERE PARTS - IN STOCK



Recoil & Adjuster Assembly for Deere 270LC, Hitachi EX270-2, Ex270LC-2, EX300-2, EX300LC-2, EX300-3, EX300LC-3 Excavator

- Made in the USA by PVE

9097317



Bearing Kit for Deere 700H, 700J s/n -275598, 700K s/n -E275435 Dozer

PV743



Clutch Disc for Deere 450J, 450K, 550J, 550K, 650J, 650K Dozer, 605C, 605K Crawler Loader

T201825



Pitch Link for Deere 450H, 550H, 650H Dozer

- Made in the USA by PVE

AT209364

*General model information only. For exact fitment check serial numbers prior to ordering.

NEW JOHN DEERE PARTS - IN STOCK



4458290R

Seat Assembly with Arms for Deere 80C, 120C, 135C, 160C, 160C LC, 200C LC, 230C LC, 270C LC, 370C, 450C LC, 600C LC Excavator



FYA00009134

Seat Assembly with Headrest, Cloth for Deere 75D, 120D, 135D, 160D LC, 200D LC, 225D LC, 240D LC, 270D LC, 350D LC Excavator

NEW CASE PARTS - IN STOCK



G101531

Bull Gear for Case 450B, 450C, 550, 550E, 550G, 550H Dozers
455B, 455C Crawler Loaders

- Made from case hardened alloy steel
- Made in the USA by PVE



87437920

Coupler for Case 580SL, 580SL Series 2, 580SM, 580SM
Series 2, 580M Series 2, 580M Series 3, 590L, 590SL, 590SL
Series 2, 590SM Backhoe



87344650

Seat Assembly with Arms for Case CX130, CX160, CX160B,
CX210, CX210B, CX240, CX240B, CX290, CX290B Excavator

NEW CAT PARTS - IN STOCK



6Y-0859

Seal, Duo Cone for Cat D3C III, D3G, D3K LGP, D3K XL, D3K2 LGP, D3K2 XL, D4C III, D4G, D4K LGP, D4K XL, D4K2 LGP, D4K2 XL, D5C III, D5G, D5H XL, D5K LGP, D5K XL, D5K2 LGP, D5K2 XL, D5M, D5N, D5R LGP, D5R XL, D5R2, D6H, D6H II, D6H XL, D6H XR, D6K, D6K LGP, D6K XL, D6K2 LGP, D6K2 XL, D6M, D6N LGP, D6N XL, D6R, D6R II, D6R III, D6R LGP, D6R STD, D6R XL, D6T, D6T LGP, D6T LGP PAT, D6T XL, D6T XL PAT, D6T XW, D6T XW PAT, D6XE, D7G, D7G2, D7H, D7R, D7R II, D7R LGP, D7R XR, D8N, D8R, D8R II, D8T - D1, D2, D3, D4, D5, D6 (Next Gen Models) Dozer, 933C, 939C, 953D, 963D, 963K Track Loader, 527 Track Skidder

NEW KOMATSU PARTS - IN STOCK



2A6-54-11951

Compartment Door R/H, rear with latch & hinge for Komatsu PC210LC-11 Excavator

- Made in the USA by PVE



2A6-54-11711

Compartment Door L/H, rear with latch & hinge for Komatsu PC210LC-11 Excavator

- Made in the USA by PVE